



# VRK3 Polyclonal Antibody

<b>Catalog No</b>	YP-Ab-15031
<b>Isotype</b>	IgG
<b>Reactivity</b>	Human;Rat;Mouse;
<b>Applications</b>	WB;ELISA
<b>Gene Name</b>	VRK3
<b>Protein Name</b>	Inactive serine/threonine-protein kinase VRK3
<b>Immunogen</b>	Synthesized peptide derived from the Internal region of human VRK3.
<b>Specificity</b>	VRK3 Polyclonal Antibody detects endogenous levels of VRK3 protein.
<b>Formulation</b>	Liquid in PBS containing 50% glycerol, 0.5% BSA and 0.02% sodium azide.
<b>Source</b>	Polyclonal, Rabbit,IgG
<b>Purification</b>	The antibody was affinity-purified from rabbit antiserum by affinity-chromatography using epitope-specific immunogen.
<b>Dilution</b>	Western Blot: 1/500 - 1/2000. ELISA: 1/40000. Not yet tested in other applications.
<b>Concentration</b>	1 mg/ml
<b>Purity</b>	≥90%
<b>Storage Stability</b>	-20°C/1 year
<b>Synonyms</b>	VRK3; Inactive serine/threonine-protein kinase VRK3; Serine/threonine-protein pseudokinase VRK3; Vaccinia-related kinase 3
<b>Observed Band</b>	53kD
<b>Cell Pathway</b>	Nucleus .
<b>Tissue Specificity</b>	Brain,Liver,Skin,Testis,Trachea,
<b>Function</b>	catalytic activity:ATP + a protein = ADP + a phosphoprotein.,function:Probable serine/threonine kinase.,similarity:Belongs to the protein kinase superfamily. CK1 Ser/Thr protein kinase family. VRK subfamily.,similarity:Contains 1 protein kinase domain.,
<b>Background</b>	vaccinia related kinase 3(VRK3) Homo sapiens This gene encodes a member of the vaccinia-related kinase (VRK) family of serine/threonine protein kinases. In both human and mouse, this gene has substitutions at several residues within the ATP binding motifs that in other kinases have been shown to be required for catalysis. In vitro assays indicate the protein lacks phosphorylation activity. The protein, however, likely retains its substrate binding capability. This gene is widely expressed in human tissues and its protein localizes to the nucleus. Alternative splicing results in multiple transcripts encoding different isoforms. [provided by RefSeq, Jul 2008],



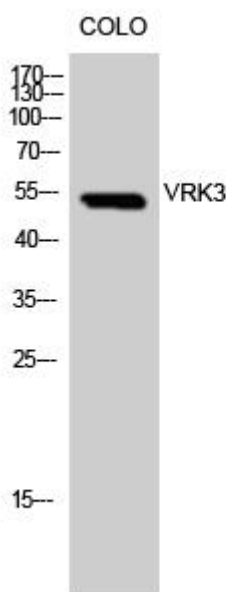
**matters needing attention**

Avoid repeated freezing and thawing!

**Usage suggestions**

This product can be used in immunological reaction related experiments. For more information, please consult technical personnel.

**Products Images**



Western Blot analysis of COLO cells using VRK3 Polyclonal Antibody. Secondary antibody(catalog#:RS0002) was diluted at 1:20000 cells nucleus extracted by Minute TM Cytoplasmic and Nuclear Fractionation kit (SC-003,Inventbiotech,MN,USA).